

C7000

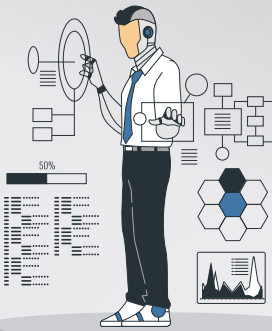
WAREHOUSE MANAGEMENT



STORE BILLING & INVENTORY



IOT & SMART SOLUTIONS



COURIER & LOGISTICS



TOLL & PARKING



HoReCa



Cloud Based MDM

Location & Geo-fencing
Device Management
OTA App Update



System Management
App Store
OTA System Update



SPECIFICATIONS - C7000

C7000	Mobile or Desktop Use 5.5-inch 18:9 Full View Display Multiple Communications Octa-core Processor Excellent Brand Scanning Engines (Zebra / Honeywell)
Processor	Qualcomm Octa-core; 64-bit processor, 2.0GHz
OS	Android 9 / Android 10 (optional)
Memory	2GB RAM + 16GB FLASH (optional 4GB RAM + 64GB FLASH), Upto 128GB Micro SD
Display	5.5-inch HD (1280x720) Ultra-wide Angle IPS Display, Corning Gorilla Glass
Keypad	5 Physical Keys (Power, Left Scan, Right Scan, Volume Up, Volume Down); On-screen Keypad
Camera	Rear: 13MP Autofocus with Flash Light; Front: 5MP Fixed Focus
NFC	ISO 14443 Type A and B; and ISO 15693 Cards
Card Slots	2 x SIM Card Slots
Barcode Scanning	Supports 1D Linear Scanner, 2D Image Scanner Supports Zebra SE47XO or Honeywell N6X03 Images (1D and 2D)
Communications	4G/3G/2G, Bluetooth v4.1 + BLE, 2.4GHz/5GHz dual band Wi-Fi
Audio	Built-in Speaker, Receiver, Microphone, Vibrator (optional)
Battery	Lithium Polymer Battery, 3.8V, 3000 mAh (optional 5000 mAh)
Adapter (Included)	Input: 100~400 AC 50/60 Hz; Output: 5.0V DC, 2.0A, Supports Quick Charge
Peripheral Ports	1 x USB Type C, 1 x Micro-SD
Certifications	CE, RoHS, BIS, IP65
Charging Base (Optional Accessory)	1 x DC 3.5mm Port (POGO), 1 x LED Power Indicator
Holder (Optional Accessory)	- UHF ISO18000-6C Trigger Holder - upto 10 meters RFID Capture - Trigger Holder



This document is provided to you for informational purposes only. All features and specifications are subject to change without notice.
Smartpeak and the Smartpeak logo are either trademarks or registered trademarks of Smartpeak Technology Limited in China and/or other countries.
All other trademarks or brand names are the properties of their respective holders. © 2019 Smartpeak Technology Limited. All rights reserved.
Specifications are subject to modification / upgrades without notice.